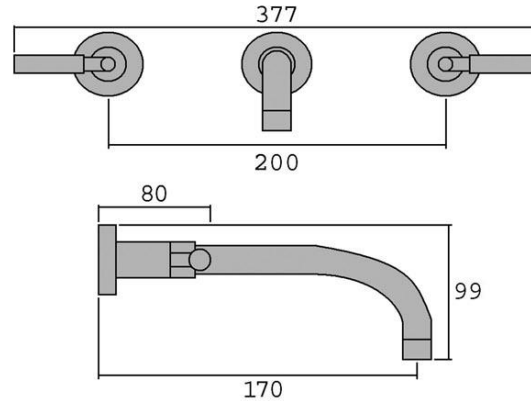


waterfront

Old Worcester Buildings, Birmingham Road, Redditch B97 6DY
(t) 01527-584244 (f) 01527-61127 (e) info@cfltd.co.uk

Fitting Instructions – Feel Range

FE.430 – Basin Wall Set (3 Hole)



Finishes:

- Chrome

Water Pressure:

Low (0.2 – 1.0 bar):	No
Medium (1.0 – 3.0 bar):	Yes
High (3.0 – 5.0 bar):	Yes

Peace of mind:

- Covered by our 7 year limited warranty

Frequent questions:

Connection: ½" BSP

Box Contents:

- FE.430 Manifold
- Control levers (2)
- Lever collars (2)
- Spout
- Spout collar
- Fitting kit

waterfront

Old Worcester Buildings, Birmingham Road, Redditch B97 6DY
(t) 01527-584244 (f) 01527-61127 (e) info@cfltd.co.uk

Fitting Instructions – Feel Range

Fitting Instructions:

First fit:

- Locate mixer body to wall and secure with fixing kit
- Connect to previously installed pipe work with the hot supply on the LHS and the cold on the RHS.

Second fit:

- Slide collars onto each control lever, and screw on to valves. Valves open with the handles in horizontal positions.
- Slide the spout collar onto the spout and screw it into the manifold. Use PTFE tape to ensure a water-tight connection.

Cleaning Instructions:

- Clean regularly.
- Wipe with a clean damp cloth, followed by a clean dry cloth.
- Abrasive or cream cleaners should **NOT** be used.
- For marks which are difficult to remove in this way, use sparingly and infrequently a 'multi use metal polish' recommended for chrome finish.

Installation:

Waterfront recommends that all its products are installed by qualified plumbers and / or builders. Waterfront will not supply replacement parts / products, or issue credit for products that have been damaged due to improper installation.

7 and 3 Year Limited Warranty

Waterfront Bathrooms warrants its products to be free from manufacturing defects in material and workmanship for a period of 7 years from the date of purchase. Water Front warrants the finish of its products for a period of 3 years from the date of purchase.

If any such product proves to be defective during the appropriate warranty period Waterfront Bathrooms will provide as similar replacement parts or products as possible at the location of the purchase.

This Warranty does not cover products or ceramic disc cartridges that have been improperly installed or subjected to abnormal or improper use or scratched or scuffed due to the use of corrosive or abrasive cleaning agents. This Warranty does not cover shower valves and shower fittings unless they have been serviced by a qualified plumber every 12 months from installation.

This Warranty does not cover shipping costs, labour costs or any other cost associated with the installation or replacement of the product parts and is provided only to the original purchaser of the product.

Subject to your statutory rights, Waterfront Bathrooms is not responsible or liable for indirect, special or consequential damages arising out of or in connection with the use or performance of its products and its liability under this Warranty is limited to replacement of the defective product or part at the location of purchase.

Waterfront Bathrooms makes no additional warranties and to the extent permitted by law, any implied warranty (including that of satisfactory quality or fitness for purpose) is limited in its duration and applicability to that of the written limited warranties set out above. Nothing in this Warranty affects your statutory rights.

Nothing in this Warranty will operate to limit or exclude Waterfront Bathrooms' liability for death or personal injury resulting from Waterfront's negligence.